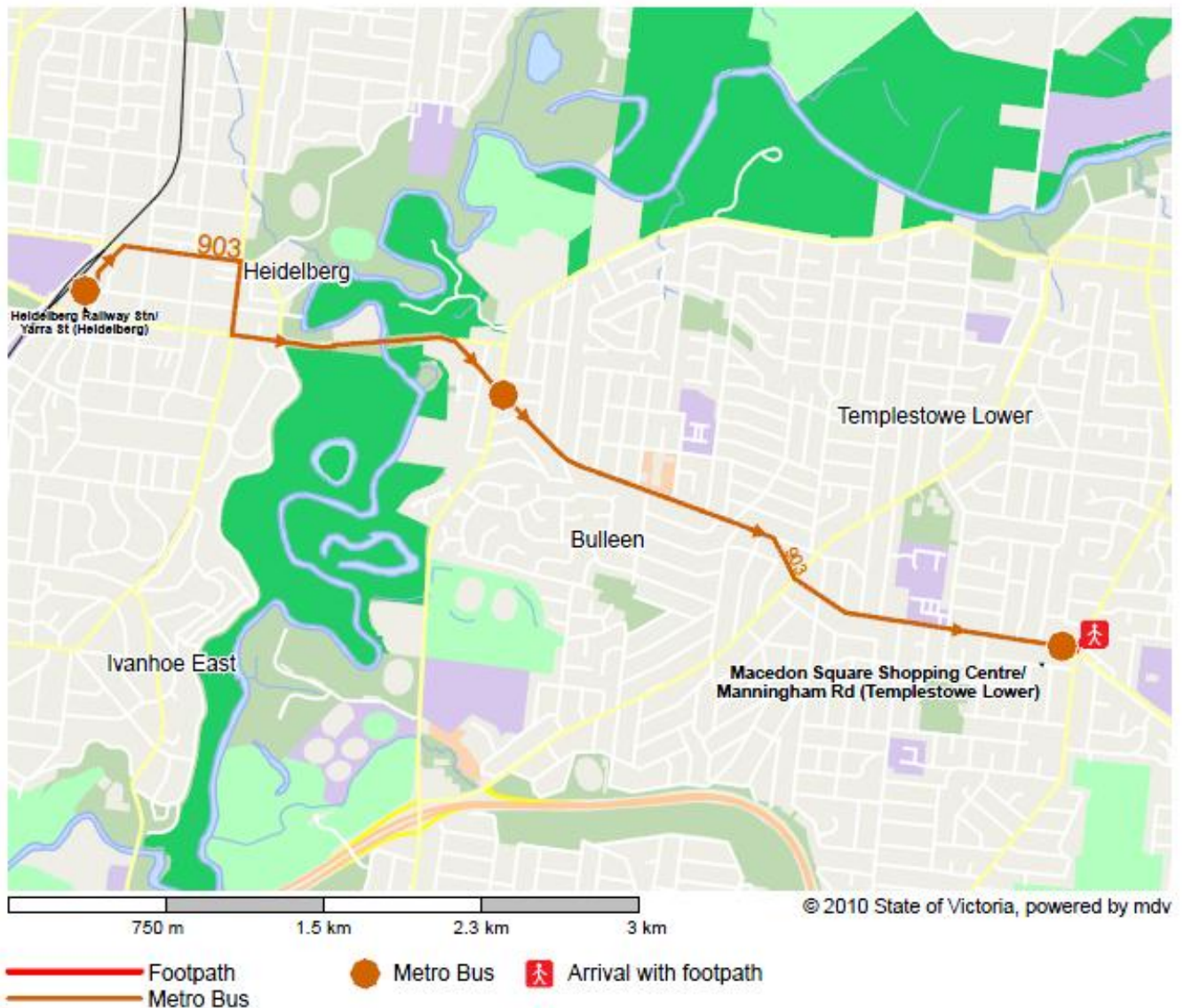


**BUS ROUTES FROM BOX HILL TO MANNINGHAM DAY PROCEDURE CENTRE**

**DETAILS FOR 903 ROUTE**

- Depart from Box Hill Bus station, BAY 2
- Take the bus Route 903 towards Altona
- Get off at the Corner of Manningham Rd and High Street
- Walk 200 metres to the MANNINGHAM DAY PROCEDURE CENTRE

Takes approximately 20 minutes



**BUS ROUTES FROM BOX HILL TO MANNINGHAM DAY PROCEDURE CENTRE**

**DETAILS FOR 281 ROUTE**

- Depart from Box Hill Bus station, BAY 4
- Take the bus Route 281 towards Templestowe
- Get off at the corner of Manningham Rd and High Street
- Walk 80 metres to the MANNINGHAM DAY PROCEDURE CENTER

Take s approximately 20 minutes

